

Rubia

崩坏3《渡尘》印象曲

周深 & Oskar Roman Jezior

钢琴谱 (Rev 2) by Azalea

$\text{♩} = 130$ *1*

Lyrics

p

Life blooms like a flower__ far away__ or by the road__

5
wai - ting for the one__ to find the way__ back home__

9
Rain falls a thou-sand times__ No foot-prints__ of come and go__

13
You who once went by__ Where will you__ be-long I feel your

17
sign and breath__ In the last blow of wind__ Not

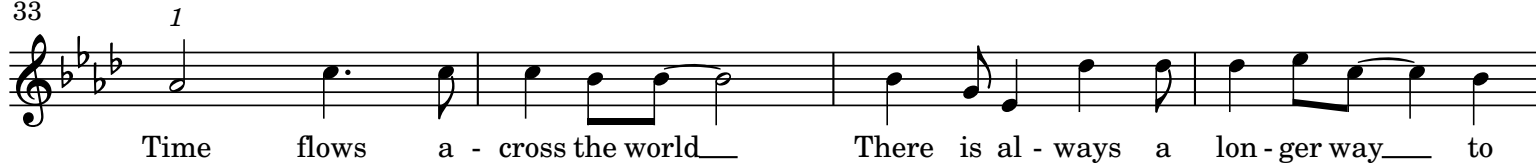
21
yet for (the) sto - ry on__ the last page__ It's not the end__

25 *1*
Life blooms like a flower__ far away__ or by the road__

29
wai - ting for the one__ to find the way__ back home__

2

33



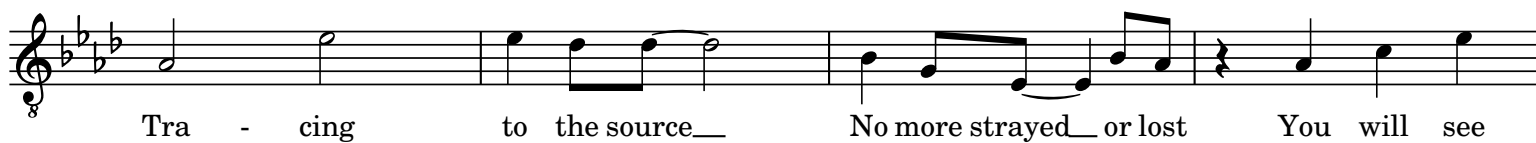
37



41



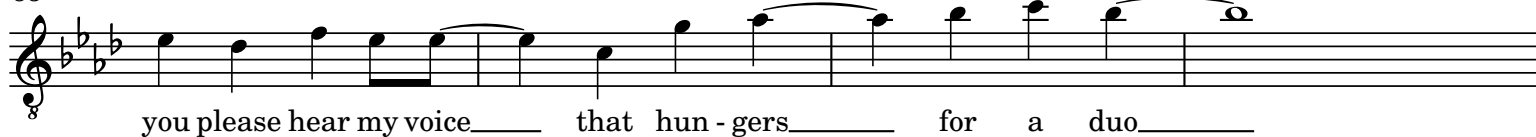
45



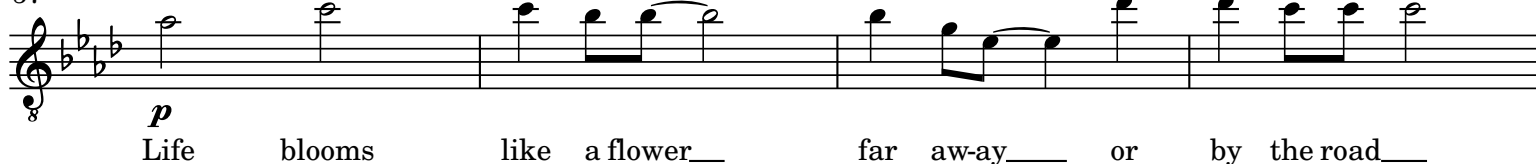
49



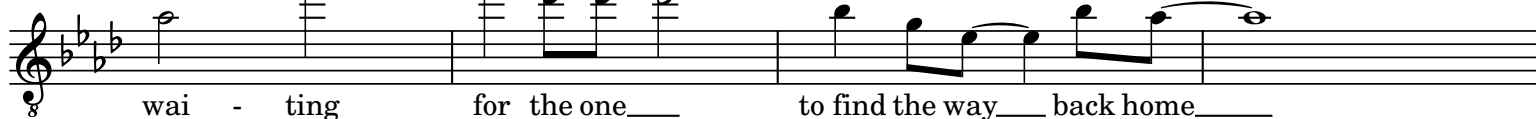
53



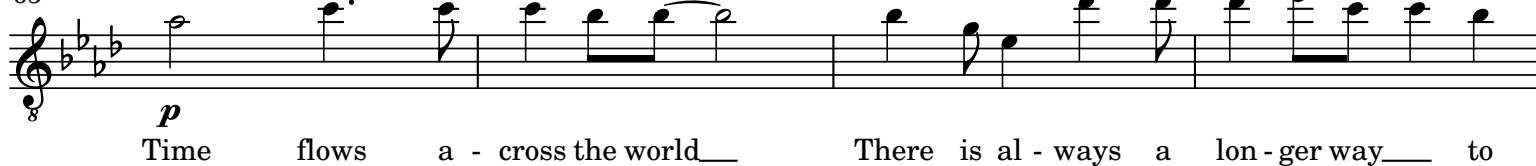
57



61



65



4

100

go Till I reach your arms__ a Mad der there__ for you

This musical staff contains measures 100 through 103. It is written in treble clef with a key signature of three sharps (F#, C#, G#). The melody begins in measure 100 with a half note G4, followed by a dotted quarter note F#4 in measure 101, an eighth note E4 in measure 102, and a quarter note D4 in measure 103. The lyrics "go Till I reach your arms__ a Mad der there__ for you" are aligned under the notes. The staff continues with rests for measures 104 and 105.

103

This musical staff contains measures 104 through 106. It is written in treble clef with a key signature of three sharps (F#, C#, G#). The staff contains whole rests for measures 104, 105, and 106.

107

rit.

This musical staff contains measures 107 through 110. It is written in treble clef with a key signature of three sharps (F#, C#, G#). The staff contains whole rests for measures 107, 108, 109, and 110. Above measure 109, there is a tempo marking "rit." followed by a dashed line. Above measure 110, there is a tempo marking "♩ = 110". The staff ends with a double bar line.